

**EBONY CABIN INFORMATION:**

**3 x 3**

44mm wall thickness T&G

Dimension 3 x 3

Basement size 2.84x2.84

Height overall 2,8 m

Roof length 4,94 m

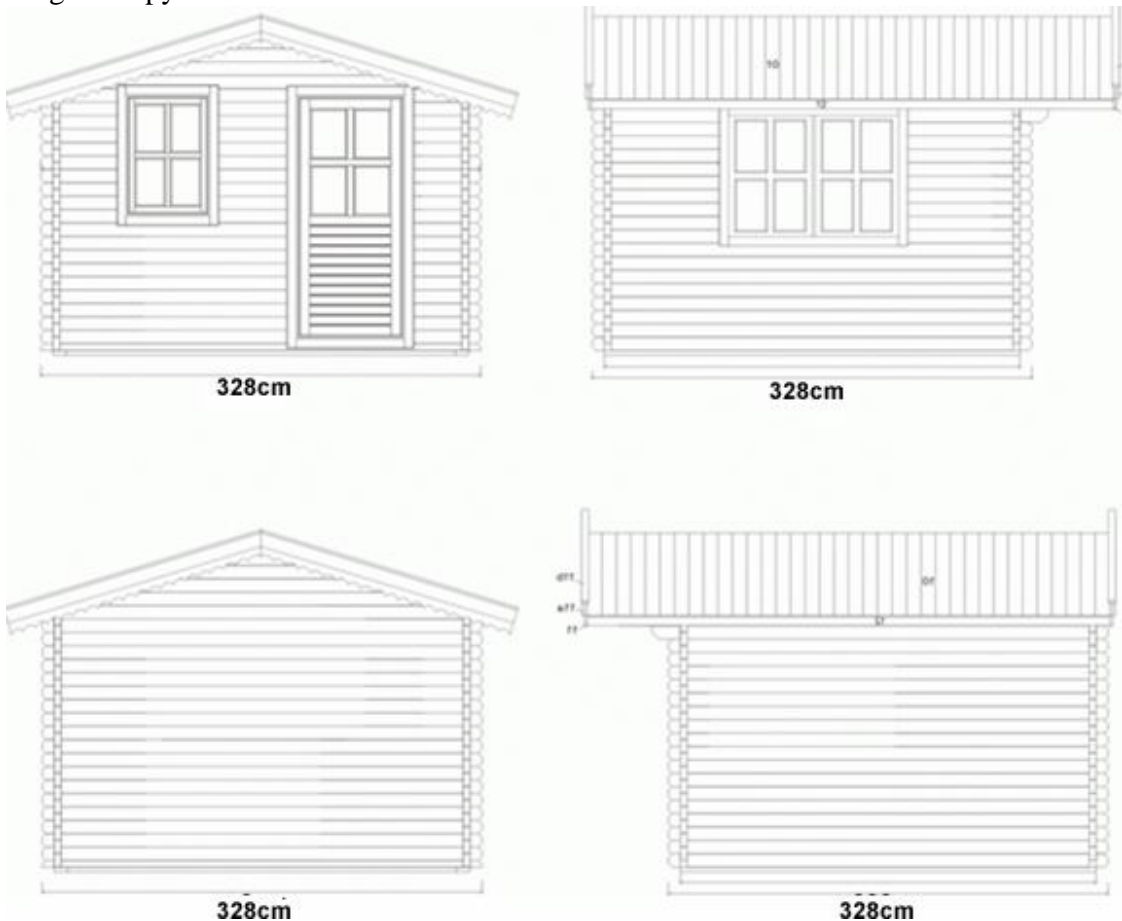
Roof area 18,8 m<sup>2</sup>

Single Door: 85 x 187 cm

Single Window (Front): 70 x 97 cm

Double Window (Side): 138 x 97 cm

Large canopy: 150cm



**3 x 4**

44 mm wall thickness T&G

Dimension 3 x 4

Basement size 2.84x3.84

Height overall 2,53 m

Roof length 5,94 m

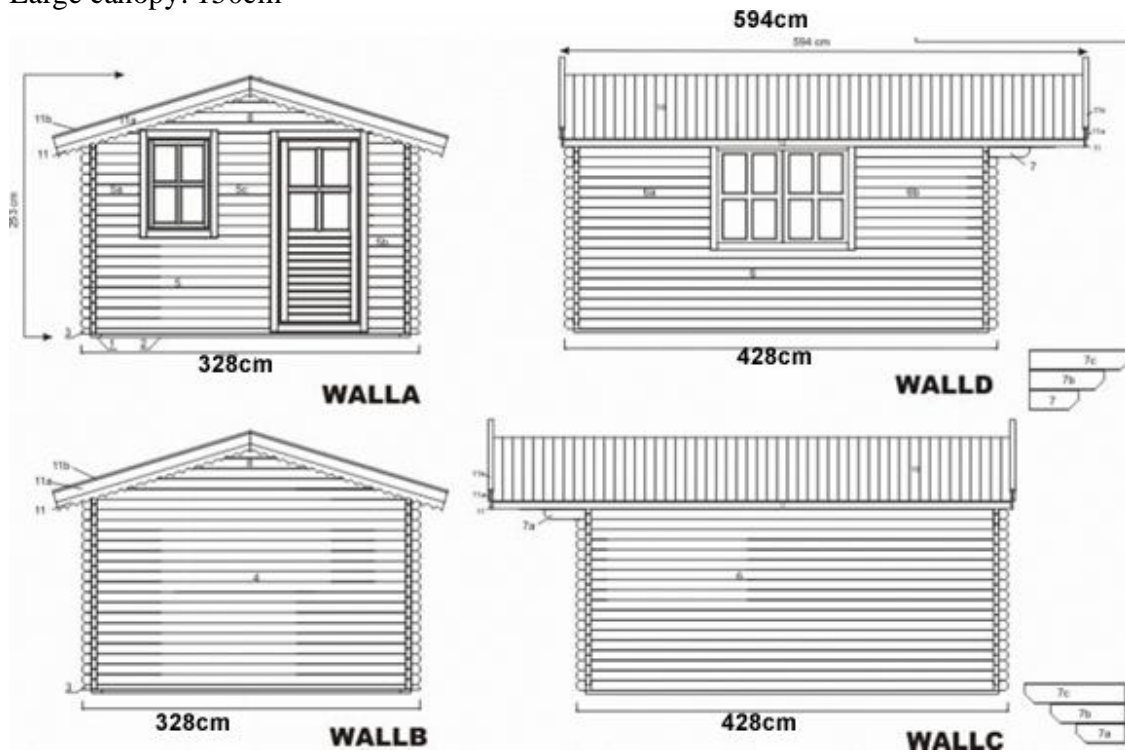
Roof area 22,6 m<sup>2</sup>

Single Door: 85 x 187 cm

Single Window (Front): 70 x 97 cm

Double Window (Side): 138 x 97 cm

Large canopy: 150cm



**4 x 3**

44mm wall thickness T&G

Dimension 4x 3

Basement size 3.84x2.84

Height overall 2,7 m

Roof length 4,94 m

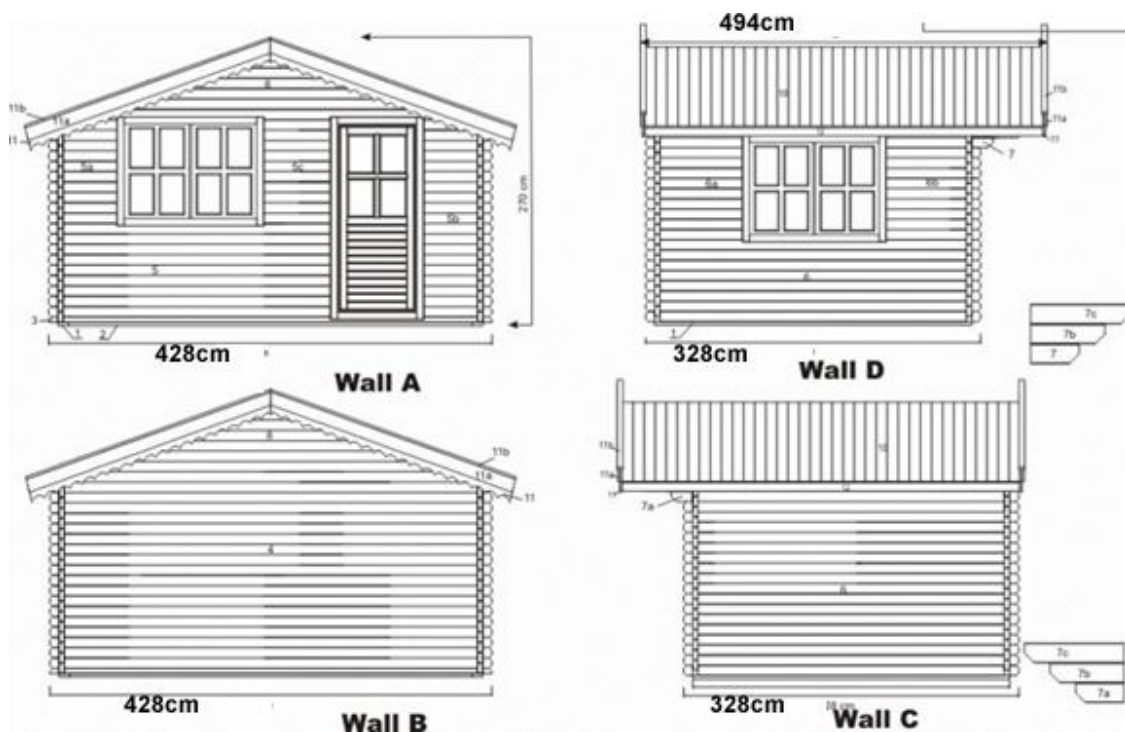
Roof area 22,6 m<sup>2</sup>

Single Door: 85 x 187 cm

Double Window (Front): 138 x 97 cm

Double Window (Side): 138 x 97 cm

Large canopy: 150cm



**4 x 4**

44mm wall thickness T&G

Dimension 4 x 4

Basement size 3.84x3.84

Height overall 2,7 m

Roof length 5,94 m

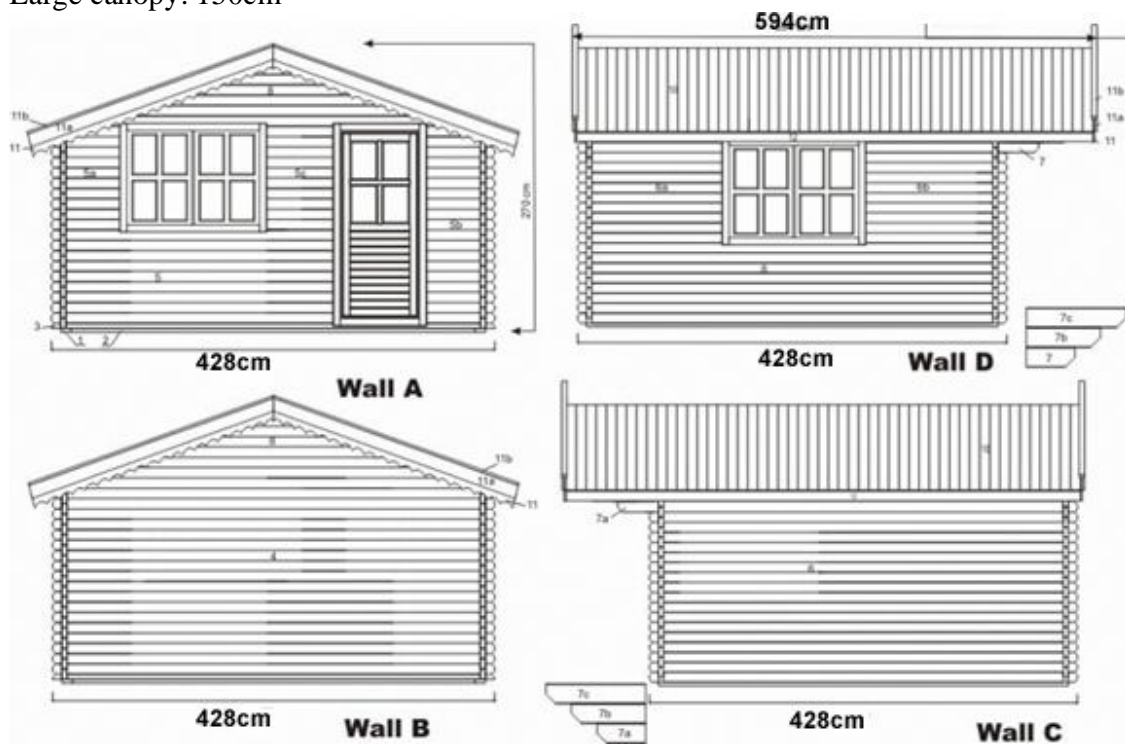
Roof area 29,2 m<sup>2</sup>

Single Door: 85 x 187 cm

Double Window (Front): 138 x 97 cm

Double Window (Side): 138 x 97 cm

Large canopy: 150cm



**4 x 5**

44mm wall thickness T&G

Dimension 4 x 5

Basement size 3.84x4.84

Height overall 2,7 m

Roof length 5,94 m

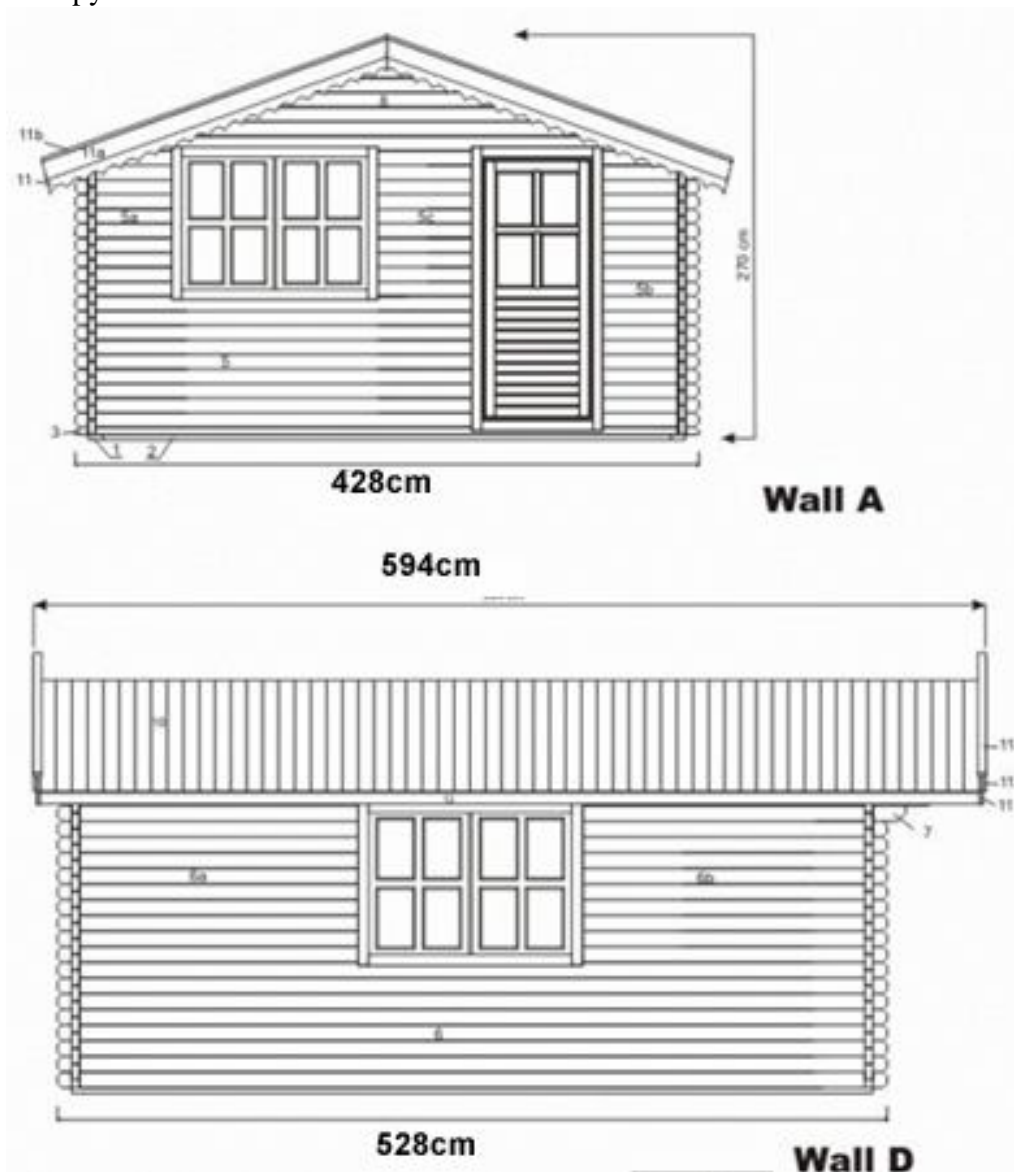
Roof area 29,2 m<sup>2</sup>

Single Door: 85 x 187 cm

Double Window (Front): 138 x 97 cm

Double Window (Side): 138 x 97 cm

Canopy: 70cm



**5 x 4**

44mm wall thickness T&G

Dimension 5 x 4

Basement size 4.84x3.84

Height overall 2,7 m

Roof length 5,14 m

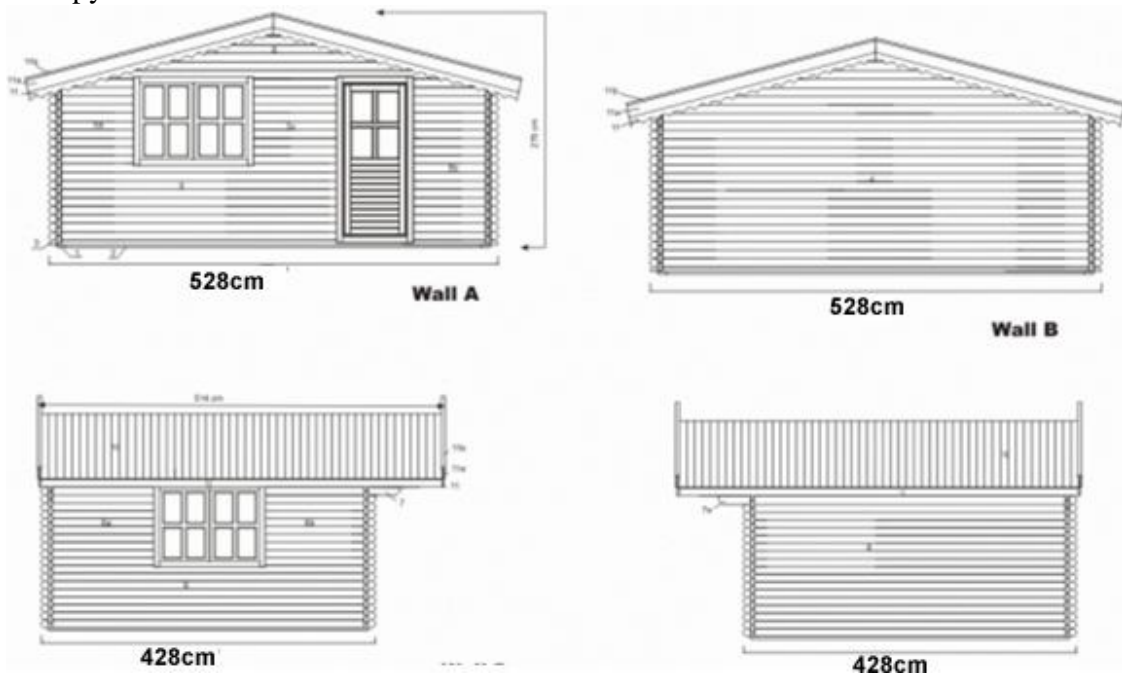
Roof area 29,2 m<sup>2</sup>

Single Door: 85 x 187 cm

Double Window (Front): 138 x 97 cm

Double Window (Side): 138 x 97 cm

Canopy: 50cm



**5 x 5**

44mm wall thickness T&G

Dimension 5 x 5

Basement size 4.84x4.84

Height overall 2,70 m

Roof length 5,94 m

Roof area 35 m<sup>2</sup>

Single Door: 85 x 187 cm

Double Window (Front): 138 x 97 cm

Double Window (Side): 138 x 97 cm

Canopy: 50cm

